
February 13th, 2025

**Board of Directors Members Present
in Person:**

Members Present via MS Teams:

**North Sound Behavioral Health
Administrative Services Organization
(North Sound BH-ASO) Staff Present:**

Guests Present:

- 1. Call to Order and Introductions** – Chair
- 2. Tribal Acknowledgement** – Chair
[Tribal Behavioral Health | North Sound BH-ASO \(nsbhaso.org\)](https://www.nsbhaso.org)
- 3. Revisions to the Agenda** – Chair
- 4. Approval of the January 9th, 2025, Minutes, Motion #25-04** Chair..... Attachment
- 5. Comments & Announcements from the Chair** - Chair
- 6. Reports from Members** - Chair
- 7. Comments from the Public** - Chair
- 8. Report from the Advisory Board** (Available at Meeting) Attachment
Kara Allen, Advisory Board Chair
- 9. Report from the Finance Officer** (Available at Meeting) Attachment
Margaret Rojas, Assistant Director
- 10. Report from the Governance Operations Committee** – Chair
 - Chair and vice-Chair Nominations

All matters listed with the Consent Agenda have been distributed to each Member for reading and study, are considered to be routine, and will be enacted by one action of the Board of Directors with no separate discussion. If separate discussion is desired, the item may be removed from the Consent Agenda and placed on the Regular Agenda by request of a Member.

Consent Agenda - Chair (Available at Meeting)Attachment

Motion #25-05 (Available at Meeting)

- To review and approve the North Sound Behavioral Health Administrative Services Organization claims paid from January 1st, 2025, through January 31st, 2025, in the amount of \$.
- Payroll for the month of January in the amount of \$ and associated employer benefits in the amount of \$.

11. Action Items – Margaret Rojas, Assistant Director

For Board Approval

Recovery Navigator Program (RNP)

- An additional \$87,061.00 was allocated to the ASO in the January 1, 2025, HCA amendment. These funds are intended to provide community-based outreach, intake, assessment, and connection to services to youth and adults with substance use disorder (SUD), including for persons with co-occurring substance use disorders and mental health conditions. Effective date of funding availability is January 1, 2025.
- The following motion is the downstream contracts allocating the additional RNP funding to two counties, Snohomish County and Island County.
 - Island County
 - January 1, 2025, addition of RNP funds \$43,530.50
 - Total RNP 12-month allocation \$804,885.50.
 - Snohomish County
 - January 1, 2025, addition of RNP funds \$43,530.50
 - Total RNP 12-month allocation \$912,030.50.

Motion #25-06

NS BH-ASO-ISLAND COUNTY-RNP-23 Amendment 3 to provide additional funding to Recovery Navigator Program services under this contract. The contract term is January 1, 2023, through December 31, 2025, with an automatic one-year renewal on January 1, 2026, based on continued compliance with the terms of the contract.

NS BH-ASO-SNOHOMISH COUNTY-RNP-23 Amendment 3 to provide additional funding to Recovery Navigator Program services under this contract. The contract term is January 1, 2023, through

December 31, 2025, with an automatic one-year renewal on January 1, 2026, based on continued compliance with the terms of the contract.

Professional Service Contract – Medical Director

- Dr. Sylvie Stacy, MD MPH, has accepted the ASO’s offer to consult as our Behavioral Health (BH) Medical Director. Dr. Stacy will provide oversight and conduct utilization reviews, participate in the development of behavioral health activities, participate in Performance Improvement processes, provide oversight for the ASO Credentialing system, and assist in the development of integrated Mental Health and Substance Use Disorder treatment programs region-wide.
- The following motion is for the professional service contract (PSC) for Dr. Stacy, with compensation for the BH Medical Director being a base rate of \$1050.00 for five (5) hours per month, and \$210.00 for each additional hour per month, billed in 15-minute increments.

Motion #25-07

NS BH-ASO-STACY-PSC-25 to provide consultation as North Sound BH-ASO’s Behavioral Health (BH) Medical Director under this contract. The contract term effective February 1, 2025, and will remain in effect for an initial term of 1 year (Initial Term), after which is will automatically renew for successive terms of 1 year each (Renewal Term).

12. Introduction Items

Margaret Rojas, Assistant Director

Center for Human Services

- Center for Human Services (CHS) is a Behavioral Health Agency (BHA) that provides youth and family outpatient mental health and Substance Use Disorder (SUD) services in Snohomish County, including in school-based settings. This is a fee for service contract.

Motion #XX-XX

NS BH-ASO-CHS-ICN-25 for the provision of outpatient services in Snohomish County. The contract term is March 1, 2025, through December 31, 2025, with an automatic one-year renewal on January 1, 2026, based on compliance with the terms of this contract.

Assisted Outpatient Treatment (AOT) Court Services

- North Sound BH-ASO has been coordinating with the Snohomish County Prosecutor’s Office, the Snohomish County Public Defender Association, and the Snohomish County Clerk’s Office to prepare court services associated with Assisted Outpatient Treatment, with a proposed effective date of March 1, 2025. Funding is

- The Snohomish County Prosecuting Attorney’s Office will represent the individuals or agencies petitioning for AOT orders in all court proceedings in accordance with RCW 71.05. They will also review AOT petitions for legal sufficiency.
- The Snohomish County Public Defender Association (SCPDA) will represent the individuals being petitioned for AOT orders in all court proceedings in accordance with RCW 71.05. SCPDA will provide a part-time defense attorney and part-time social worker to represent all persons who are not represented by counsel and who are AOT participants.
- The Superior Court Clerk is responsible for processing all court documents relating to AOT including AOT petitions, declarations, orders, petitions for revocation, notices of hearings, and others. They are responsible for keeping minutes of AOT hearings, filing orders entered during court, and entering information into the statewide court system.

Motion XX-XX

NS BH-ASO-SNOHOMISH PROSECUTING ATTORNEY-AOT-25 to provide funding in the amount of **\$33,085.00** for court services in Snohomish County. The contract term is March 1, 2025, through February 28, 2026, with an automatic one-year renewal on March 1, 2025, based on continued compliance with the terms of the contract.

NS BH-ASO-SCPDA-AOT-25 to provide funding in the amount of **\$111,958.85** for court services in Snohomish County. The contract term is March 1, 2025, through February 28, 2026, with an automatic one-year renewal on March 1, 2025, based on continued compliance with the terms of the contract.

NS BH-ASO-SNOHOMISH CLERKS OFFICE-AOT-25 to provide funding in the amount of **\$9,665.00** for court services in Snohomish County. The contract term is March 1, 2025, through February 28, 2026, with an automatic one-year renewal on March 1, 2025, based on continued compliance with the terms of the contract.

13. DRAFT Report from the Executive Director Attachment
 JanRose Ottaway Martin, Executive Director

14. Adjourn - Chair

Next Meeting: March 13th, 2025

Board of Directors

Meeting Minutes

January 9th, 2025

Board of Directors Members Present in Person:

- Barry Buchanan, Chair of the NS BH-ASO Board of Directors, County Council; Whatcom County
- Peter Browning, Commissioner; Skagit County
- George Kosovich, Skagit County Public Health, designated alternate for Peter Browning; Skagit County
- Amanda Franke, Human Services, designated alternate for Dave Somers, County Executive; Snohomish County

Members Present via MS Teams:

- Nicole Gorle, Legislative Analyst, designated alternate for Nate Nehring, County Council; Snohomish County
- Jami Mitchell, Human Services Manager, designated alternate for Justin Paulsen, County Council, San Juan County
- Cynthia Foley, Sr. Legislative Analyst, designated alternate for Sam Low, County Council; Snohomish County
- Malora Christensen, Response Systems Division Manager, designated alternate for Satpal Sidhu, County Executive; Whatcom County
- Kara Allen, Advisory Board Chair

North Sound Behavioral Health Administrative Services Organization (North Sound BH-ASO) Staff Present:

- JanRose Ottaway Martin, Executive Director
- Margaret Rojas, Assistant Director, Privacy Officer
- Michael McAuley, Clinical Director
- Charles DeElena, Business Improvement Manager, Compliance Officer
- Darrell Heiner, Senior Accountant
- Kim Nakatani, Senior Accountant
- Alma Solano, Accounting Specialist
- Maria Arreola, Senior Administrative

- Assistant
- o Joanie Wenzl, Admin Manager, Clerk of the Board

Guests Present:

No guests were present

Call to Order and Introductions – Chair

The Chair called the meeting to order and had members introduce themselves.

Introduction of NS BH-ASO's new Accountant, Alma Solano-Margaret Rojas
Margaret introduced Alma Solano, ASO's new Accounting Specialist

Tribal Acknowledgement – Chair

[Tribal Behavioral Health | North Sound BH-ASO \(nsbhaso.org\)](https://www.nsbhaso.org)

The Chair read the Tribal Acknowledgement

Revisions to the Agenda – Chair

There were no requests to revise the agenda

Approval of the December 12th, 2024, Minutes, Motion #25-01 – Chair.... Attachment
Peter Browning moved the motion to be approved, Amanda Franke seconded, none opposed, all in favor, motion #25-01 carried

Comments & Announcements from the Chair – Chair

The Chair welcomed everyone to the new year (2025) and said he is looking forward to a productive and action filled new year.

Reports from Members – Chair

Members gave updates on behavioral health happenings in their respective counties.

Comments from the Public – Chair

There were no comments from the public as none were in attendance.

Report from the Advisory Board

Kara Allen, Advisory Board Chair

The Advisory Board Chair gave the report from the January meeting.

Report from the Finance Officer

Margaret Rojas, Assistant Director

Margaret gave the report from the Finance Officer and answered questions.

Report from the Governance Operations Committee – Chair

The Chair spoke about the upcoming nominations and election of the 2025 NS BH-ASO Board Chair and Vice Chair that will take place during the February meeting.

All matters listed with the Consent Agenda have been distributed to each Member for reading and study, are considered to be routine, and will be enacted by one action of the Board of Directors with no separate discussion. If separate discussion is desired, the item may be removed from the Consent Agenda and placed on the Regular Agenda by request of a Member.

Motion #25-02

- To review and approve the North Sound Behavioral Health Administrative Services Organization claims paid from December 1st, 2024, through December 31st, 2024, in the amount of \$5,106,470.78.
- Payroll for the month of December in the amount of \$200,399.34 and associated employer benefits in the amount of \$105,390.31.

Barry Buchanan moved the motion for approval, Peter Browning seconded, none opposed, no abstentions, all in favor, motion #25-02 carried.

Action Items – Margaret Rojas, Assistant Director

For Board Approval

Telecare Corp.-Peer Bridger Services

- Telecare provides Peer Bridger services for the region, the program is designed to engage individuals to facilitate discharge from Western State Hospital, local hospitals and Evaluation & Treatment Centers for North Sound residents.
- Health Care Authority increased the funding for the Peer Bridgers program, this amendment passes through the additional funding and makes the following adjustments-
 - Adding HCA increase of \$67,500
 - Removal of \$50,000 of General Funds-State provided by ASO
 - Overall increase of \$17,500.00

Motion #25-03

NS BH-ASO-Telecare-FBG-23 Amendment 4 to provide additional funding to Peer Bridger services under this contract. The contract term is January 1, 2023, through December 31, 2025, with an automatic one-year renewal on January 1, 2026, based on continued compliance with the terms of the contract.

Peter Browning moved the motion for approval, Amanda Franke seconded, none opposed, none abstained all in favor Motion #25-03 carried

Report from the Executive Director

JanRose Ottaway Martin, Executive Director

JanRose gave the Report from the Executive Director that included the following topics:

- Weekly Crisis Metrics Report
- BHASO Reserve Funds
- Whatcom Listening Sessions
- Lynnwood Crisis Care Facility
- Stimulant Use/Interventions Training
- Legislative Update

Adjourn – The Chair adjourned the meeting at 2:23 p.m.

Next Meeting: February 13th, 2025

Weekly Crisis Metrics Report:

See attached.

BHASO Reserve Funds

Previously:

HCA met with the Washington State BHASOs on December 13th to notify ASOs that they would be taking back approximately 50% of ASO reserve funds. North Sound ASO has been working with HCA and other ASOs in the state to navigate this request.

Of note, in the total reserves calculated by HCA, they do not take into account funds already in contract and/or committed to programs. In the North Sound region, they also didn't take into account Proviso 13B which went into effect after the date HCA noted our reserves (end of June 2024). We are working on calculating impact to our region and programming, as well as new programs that were in development, and are going to meet with HCA before the end of the month. We will bring this information to the Board and Advisory Board as we get more insight. We will be advocating to maintain as much of the reserves for regional use as possible.

Update:

North Sound ASO met with HCA on January 23rd to detail the impact of this pull back from our region. While HCA indicated a willingness to collaborate, and asked that we prepare a counter proposal, the HCA received a letter from the governor's office the next day indicating they need to cut their budget by approximately \$500 million. From what we understand from partners across the state, the HCA started to indicate that they would have less flexibility than what had been messaged to North Sound on the 23rd.

After OMB Memorandum M 25-13, and a lot of questions about future funding freezes that may occur, the conversation has expanded to a larger body of people given concerns about ASOs needing to unexpectedly cover crisis system costs if, at such time, a freeze occurs to our funding. While that Memo was, at least partially, rescinded, the financial risk has been identified as extremely high. We continue to work with Stakeholders on this important issue and counties have been great partners in advocating for maintaining these funds at a local level.

Whatcom Listening Sessions:

The final listening session was completed with Whatcom County partners, and the notes are being summarized now for review.

Lynnwood Crisis Care Facility

Our first two stakeholder workgroup meetings occurred for the Lynnwood Crisis Care Facility. We have drafted an initial RFP for the facility and have a request out to the group for feedback.

The continued issue is operational funding moving forward. Rep. Davis is hosting a meeting tonight with people throughout the state to identify potential pathways forward for operational funds.

Seattle Times ran a very good article summarizing the issue: [A new mental health crisis center in Lynnwood lacks operator, can't open | The Seattle Times](#)

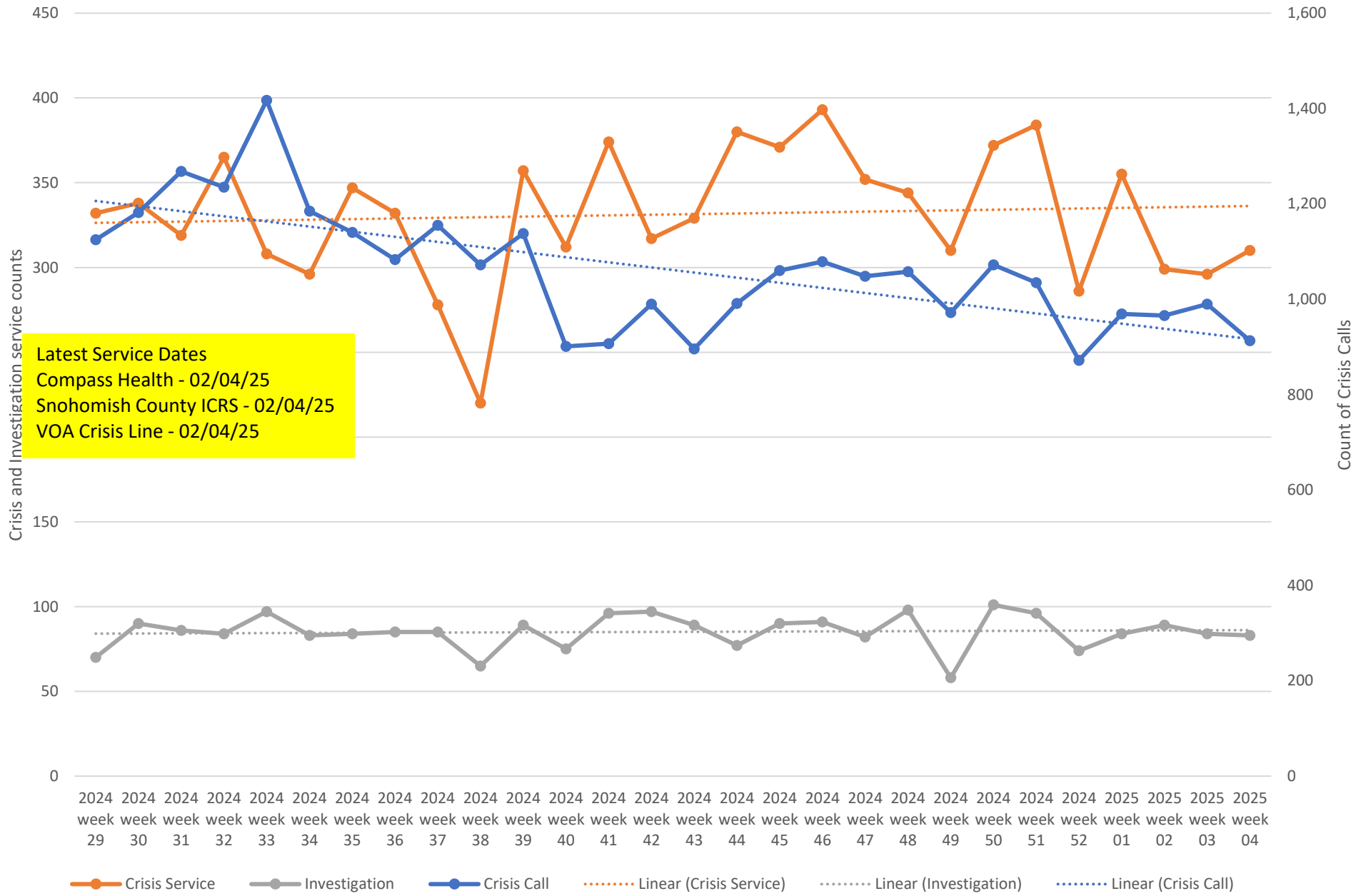
Legislative Update



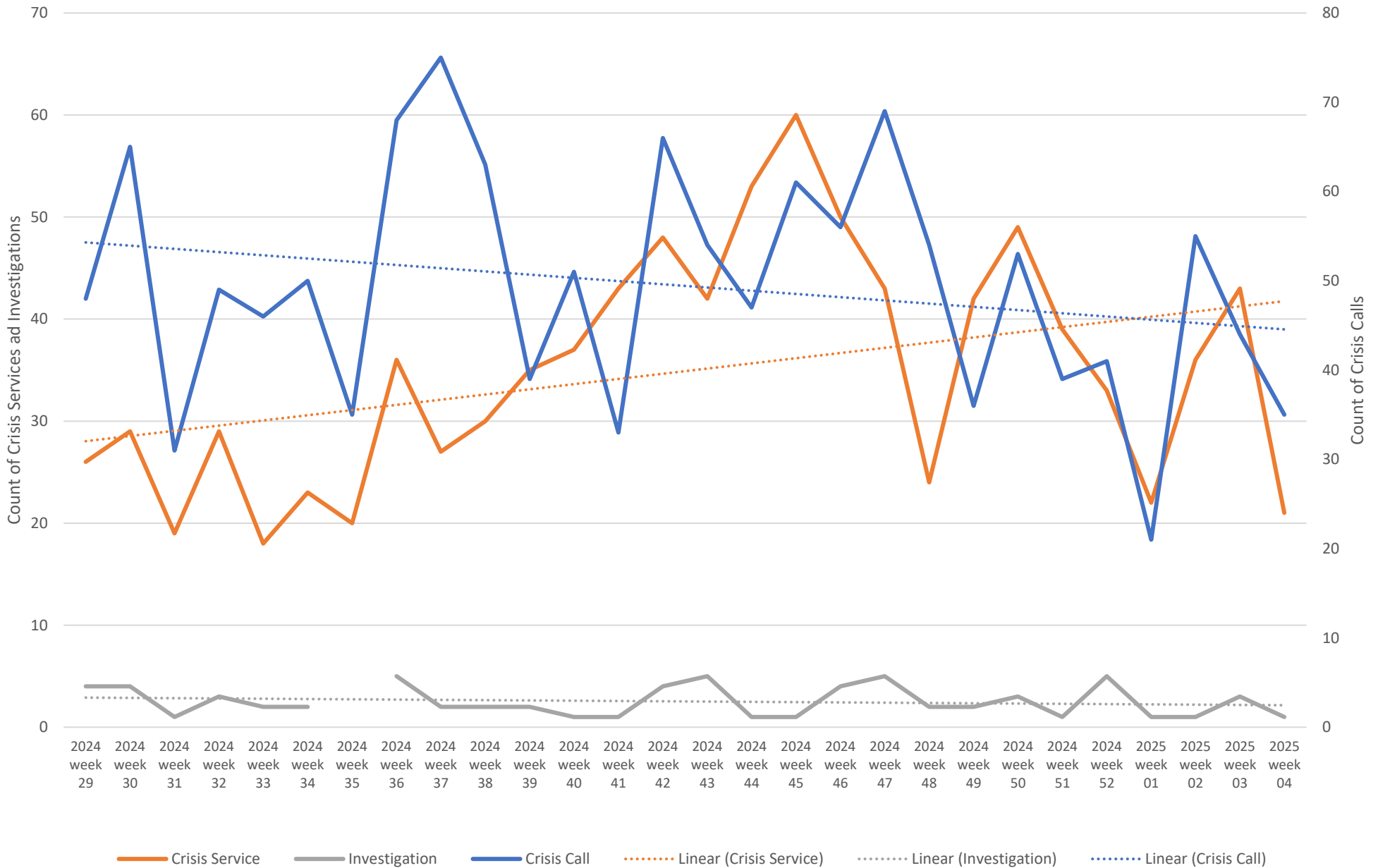
Weekly Crisis Capacity Indicator Snapshot

Page 2	Crisis Data - dates 07/14/24 to 01/25/25
Page 3	Crisis Data: Ages 0-17 - dates 07/14/24 to 01/25/25
Page 4	All DCR Dispatches - dates 07/14/24 to 01/25/25
Page 5	Weekly Staff Count - Staff providing Crisis or Investigation services 07/14/24 to 01/25/25
Page 6	Hospital placement locations (Invol and Vol) - No adjustment has been made for timely data - recent weeks likely low
Page 7	Telehealth only, crisis and investigation services from 07/14/24 to 01/25/25
Page 8	Crisis Service Unit Percent - Crisis Service units divided by Crisis units + Investigation units
Page 9	Washington State Indicators of Anxiety or Depression Based on Reported Frequency of Symptoms During Last 7 Days
Page 10	Place of Service -Crisis Services, percent of total by week
Page 11	Place of Service -Investigations, percent of total by week
Page 12	North Sound BH ASO Walkaway Chart 07/14/24 to 01/25/25

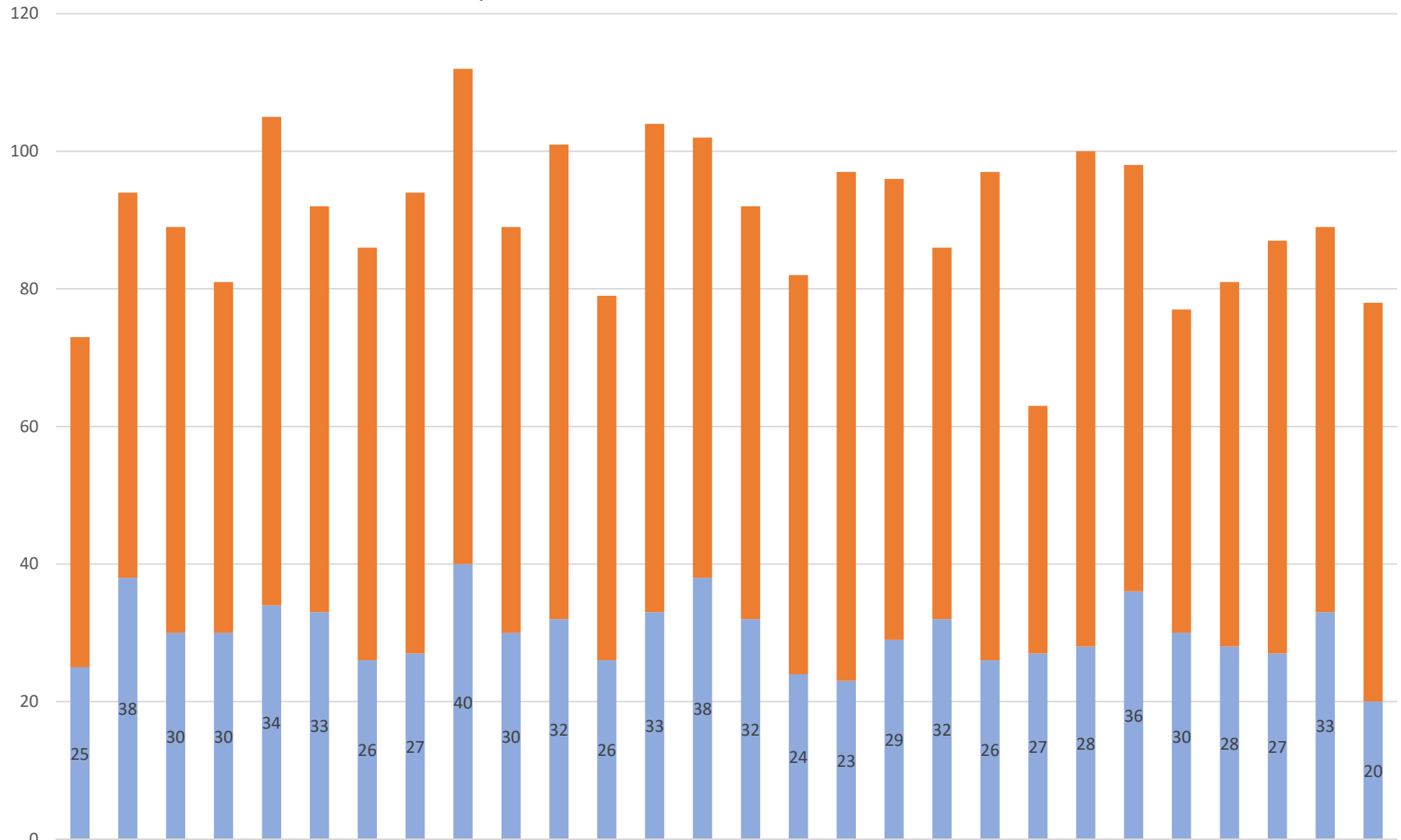
Crisis Data - dates 07/14/24 to 01/25/25



Crisis Data: Ages 0-17 - dates 07/14/24 to 01/25/25



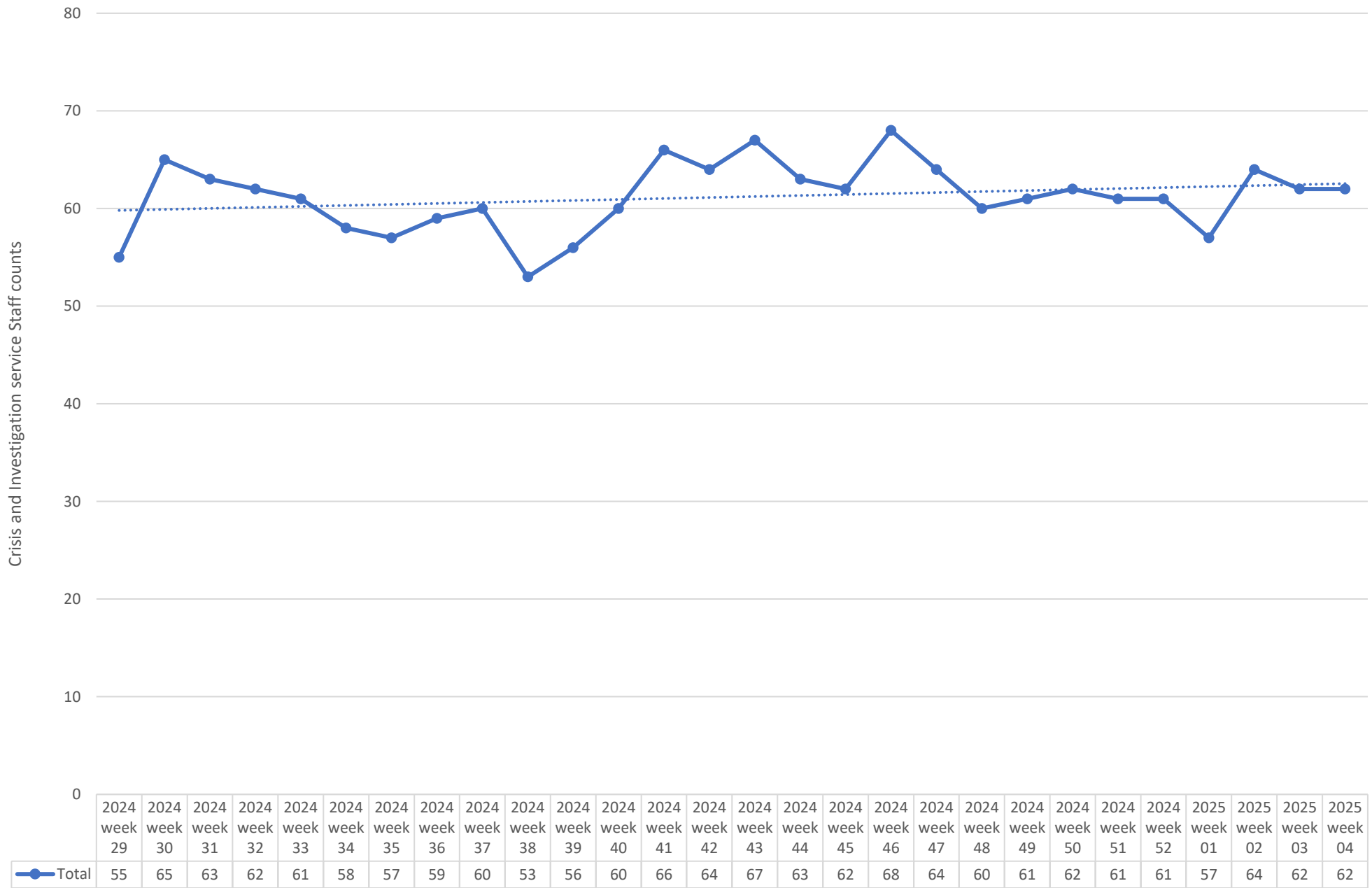
All DCR Dispatches - dates 07/14/24 to 01/25/25



■ dispatch resulting in other outcome
■ dispatch resulting in detention

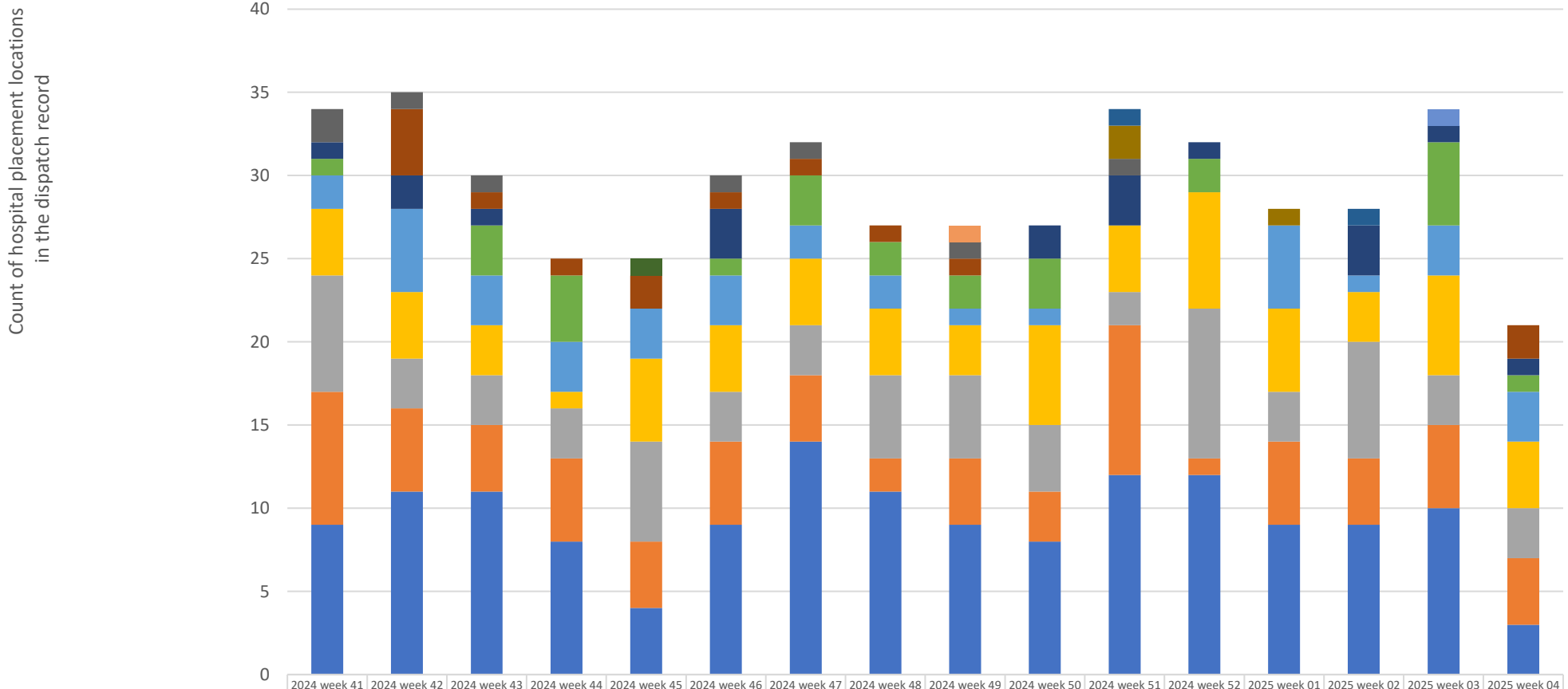
2024 week 29	48	25
2024 week 30	56	38
2024 week 31	59	30
2024 week 32	51	30
2024 week 33	71	34
2024 week 34	59	33
2024 week 35	60	26
2024 week 36	67	27
2024 week 37	72	40
2024 week 38	59	30
2024 week 39	69	32
2024 week 40	53	26
2024 week 41	71	33
2024 week 42	64	38
2024 week 43	60	32
2024 week 44	58	24
2024 week 45	74	23
2024 week 46	67	29
2024 week 47	54	32
2024 week 48	71	26
2024 week 49	36	27
2024 week 50	72	28
2024 week 51	62	36
2024 week 52	47	30
2025 week 01	53	28
2025 week 02	60	27
2025 week 03	56	33
2025 week 04	58	20

Weekly Staff Count - Staff providing Crisis or Investigation services 07/14/24 to 01/25/25



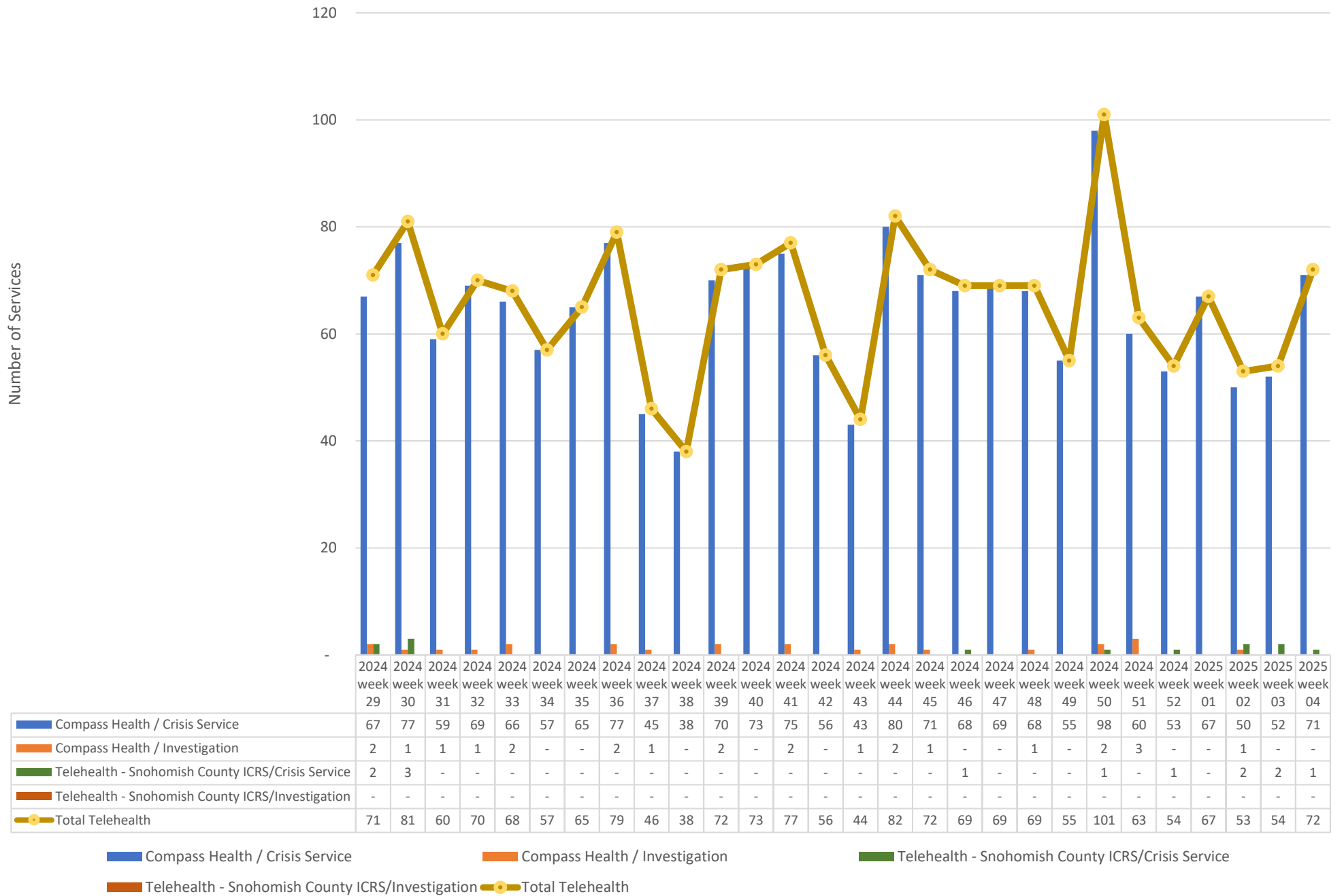
2025 week 04 ending 01/00/00

Hospital placement locations (Invol and Vol) - No adjustment has been made for timely data - recent weeks likely low

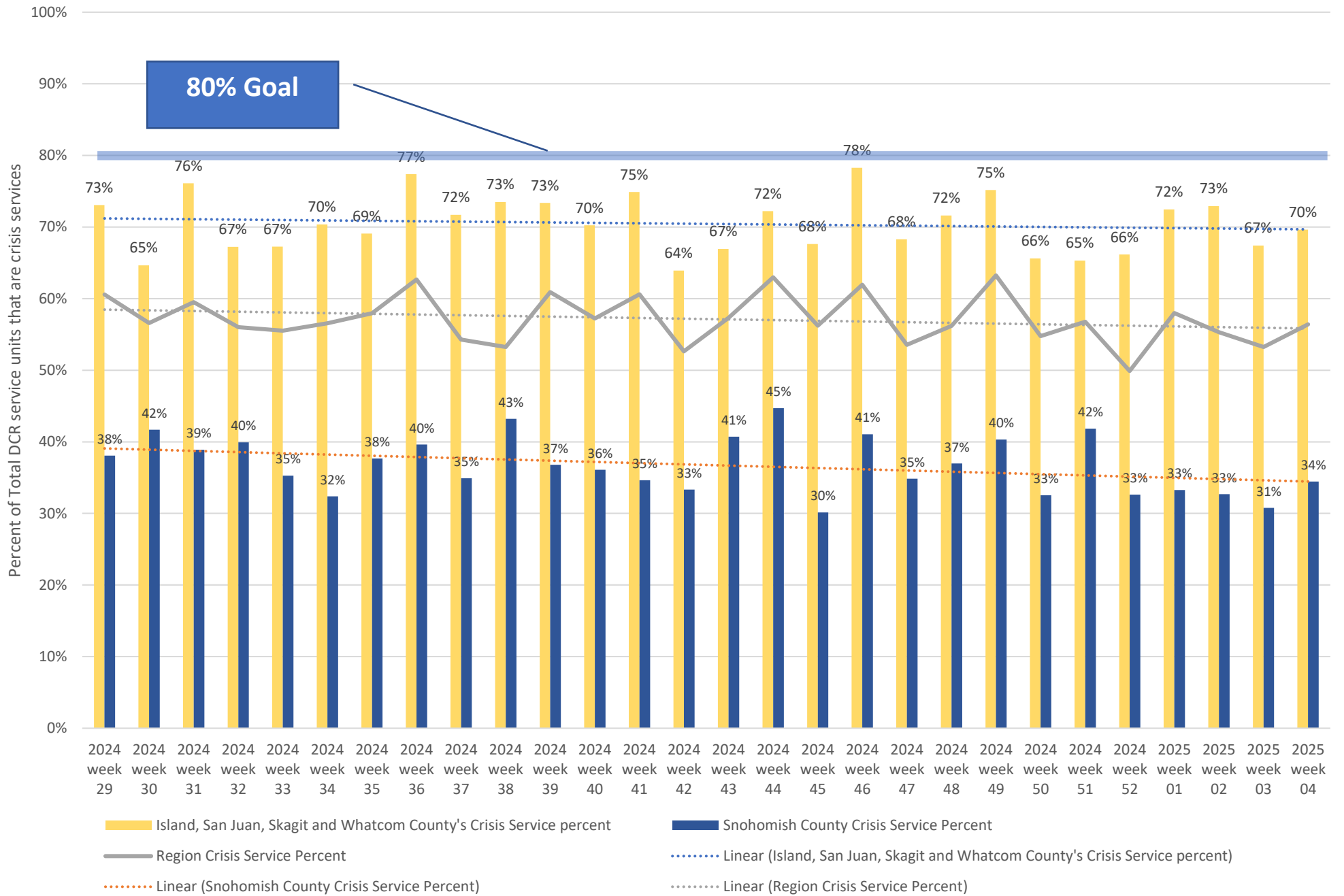


	2024 week 41	2024 week 42	2024 week 43	2024 week 44	2024 week 45	2024 week 46	2024 week 47	2024 week 48	2024 week 49	2024 week 50	2024 week 51	2024 week 52	2025 week 01	2025 week 02	2025 week 03	2025 week 04
South Sound Vest Thurston									1							
Swedish Mill Creek															1	
Western State					1											
VALLEY GENERAL HOSPITAL														1		
THURSTON/MASON EandT FACILITY											1					
ABHS Chehalis	2	1	1			1	1		1		1					
Telecare North Sound Evaluation and Treatment		4	1	1	2	1	1	1	1							2
BHC Fairfax Hospital INC	1	2	1			3				2	3	1		3	1	1
Mukilteo	1		3	4		1	3	2	2	3		2			5	1
SMOKEY POINT BEHAVIORAL HOSPITAL	2	5	3	3	3	3	2	2	1	1			5	1	3	3
Peacehealth Bellingham	4	4	3	1	5	4	4	4	3	6	4	7	5	3	6	4
SWEDISH EDMONDS	7	3	3	3	6	3	3	5	5	4	2	9	3	7	3	3
Skagit Valley Hospital	8	5	4	5	4	5	4	2	4	3	9	1	5	4	5	4
Providence Everett	9	11	11	8	4	9	14	11	9	8	12	12	9	9	10	3

Telehealth only, crisis and investigation services from 07/14/24 to 01/25/25



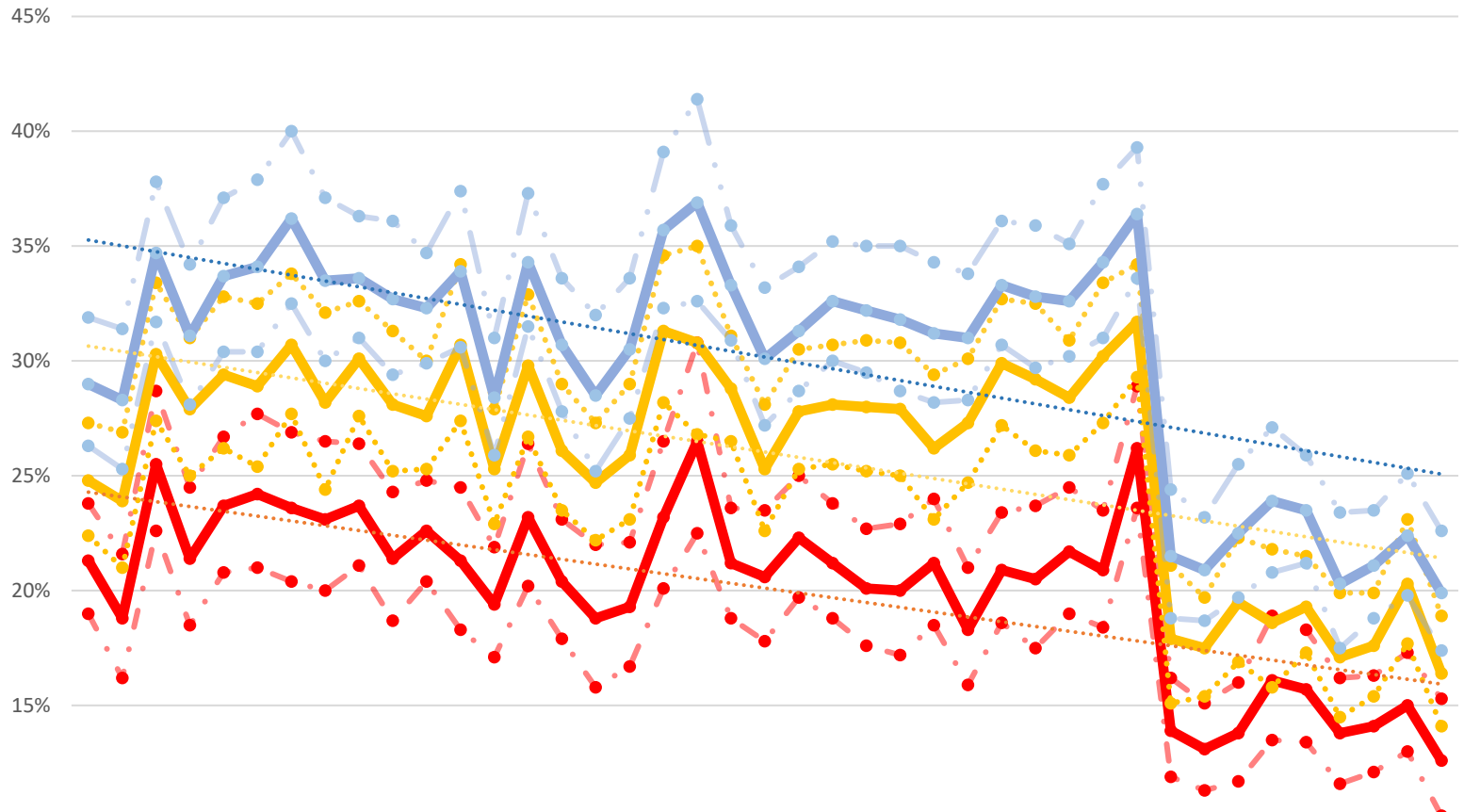
Crisis Service Unit Percent - Crisis Service units divided by Crisis units + Investigation units



Washington State Indicators of Anxiety or Depression Based on Reported Frequency of Symptoms During Last 7 Days

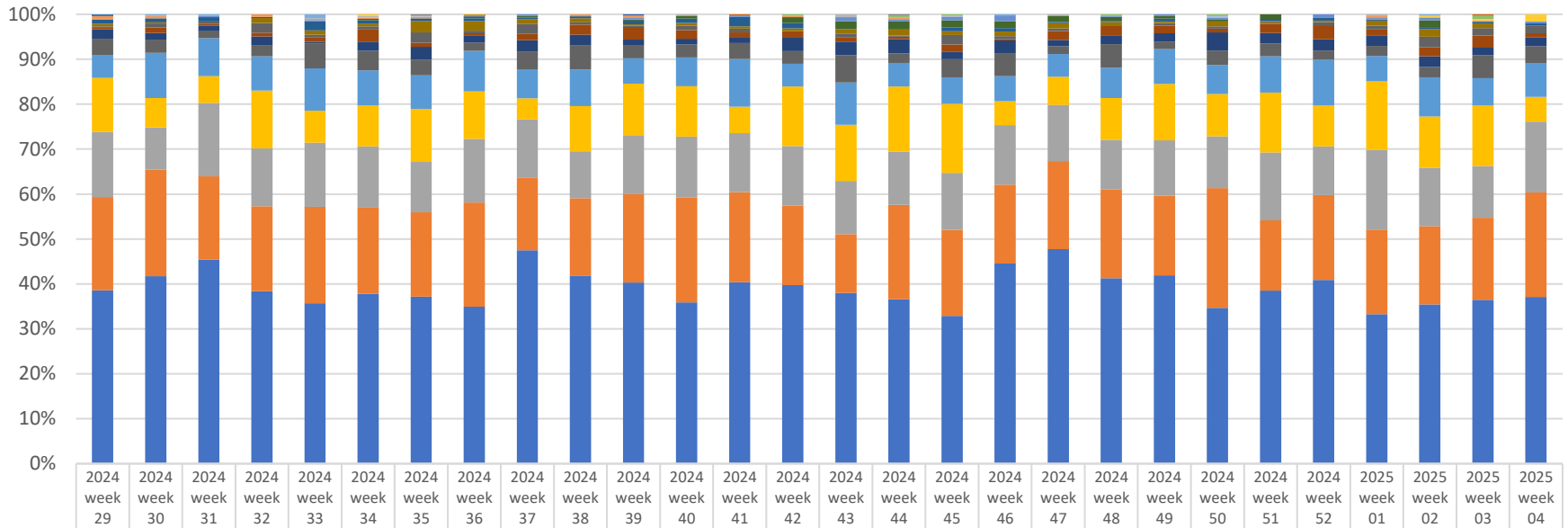
The U.S. Census Bureau, in collaboration with five federal agencies, launched the Household Pulse Survey to produce data on the social and economic impacts of Covid-19 on American households. The Household Pulse Survey was designed to gauge the impact of the pandemic on employment status, consumer spending, food security, housing, education disruptions, and dimensions of physical and mental wellness.

<https://data.cdc.gov/NCHS/Indicator-s-of-Anxiety-or-Depression-Based-on-Repor/8pt5-q6wp>



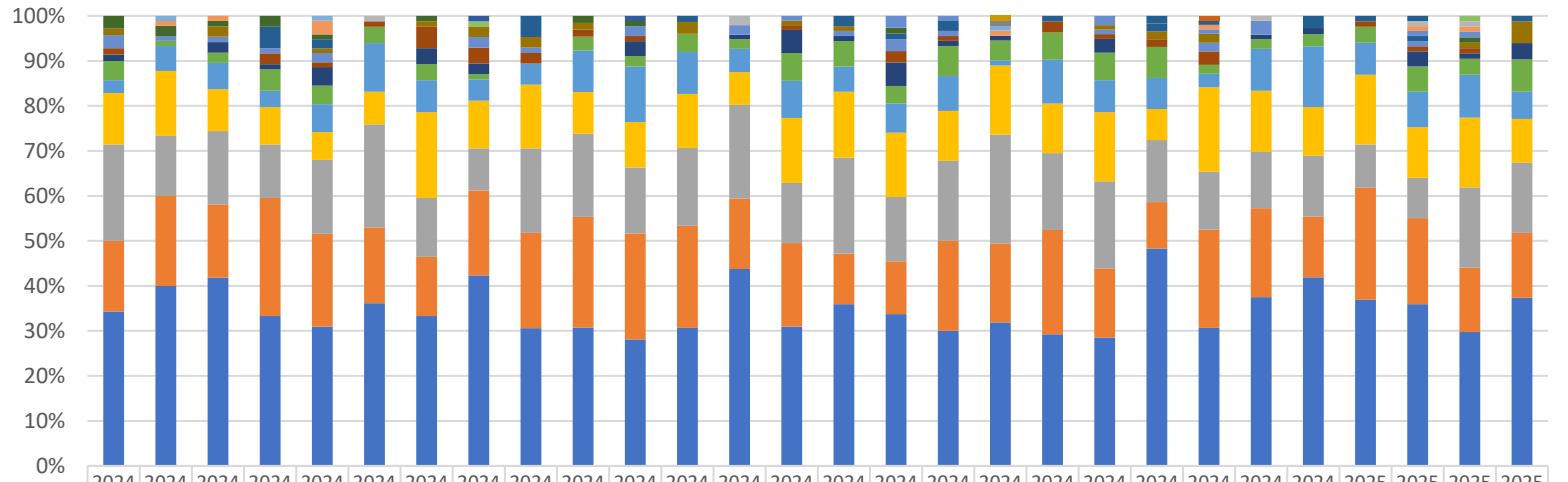
● % with Symp. of Depr. Dsrdr low conf.	19%	16%	23%	19%	21%	21%	20%	20%	21%	19%	20%	18%	17%	20%	18%	16%	17%	20%	23%	19%	18%	20%	19%	18%	17%	19%	16%	19%	18%	21%	18%	24%	12%	11%	12%	14%	13%	12%	12%	13%	10%	
● % with Symp. of Depr. Dsrdr value	21%	19%	26%	21%	24%	24%	24%	23%	24%	21%	23%	21%	19%	23%	20%	19%	19%	23%	27%	21%	21%	22%	21%	20%	20%	21%	18%	21%	21%	22%	21%	26%	14%	13%	14%	16%	16%	14%	14%	15%	13%	
● % with Symp. of Depr. Dsrdr high conf.	24%	22%	29%	25%	27%	28%	27%	27%	26%	24%	25%	25%	22%	26%	23%	22%	22%	27%	31%	24%	24%	25%	24%	23%	24%	21%	23%	24%	25%	24%	29%	16%	15%	16%	19%	18%	16%	16%	17%	15%		
● % with Symp. of Anxiety Dsrdr low conf.	22%	21%	27%	25%	26%	25%	28%	24%	28%	25%	25%	27%	23%	27%	24%	22%	23%	28%	27%	27%	23%	25%	26%	25%	25%	23%	24%	25%	27%	26%	26%	27%	29%	15%	15%	17%	16%	17%	15%	15%	18%	14%
● % with Symp. of Anxiety Dsrdr value	25%	24%	30%	28%	29%	29%	31%	28%	30%	28%	28%	31%	25%	30%	26%	25%	26%	31%	31%	29%	25%	28%	28%	28%	28%	26%	27%	30%	29%	28%	30%	32%	18%	18%	20%	19%	19%	17%	18%	20%	16%	
● % with Symp. of Anxiety Dsrdr high conf.	27%	27%	33%	31%	33%	33%	34%	32%	33%	31%	30%	34%	28%	33%	29%	27%	29%	35%	35%	31%	28%	31%	31%	31%	31%	29%	30%	33%	33%	31%	33%	34%	21%	20%	22%	22%	22%	20%	20%	23%	19%	
● % with Symp. of Anxiety or Depr. Dsrdr low conf.	26%	25%	32%	28%	30%	30%	33%	30%	31%	29%	30%	31%	26%	32%	28%	25%	28%	32%	33%	31%	27%	29%	30%	30%	29%	28%	28%	31%	30%	30%	31%	34%	19%	19%	20%	21%	21%	18%	19%	20%	17%	
● % with Symp. of Anxiety or Depr. Dsrdr value	29%	28%	35%	31%	34%	34%	36%	34%	34%	33%	32%	34%	28%	34%	31%	29%	31%	36%	37%	33%	30%	31%	33%	32%	32%	31%	31%	33%	33%	34%	36%	22%	21%	23%	24%	24%	20%	21%	22%	20%		
● % with Symp. of Anxiety or Depr. Dsrdr high conf.	32%	31%	38%	34%	37%	38%	40%	37%	36%	36%	35%	37%	31%	37%	34%	32%	34%	39%	41%	36%	33%	34%	35%	35%	35%	34%	34%	36%	36%	35%	38%	39%	24%	23%	26%	27%	26%	23%	24%	25%	23%	

Place of Service -Crisis Services, percent of total by week



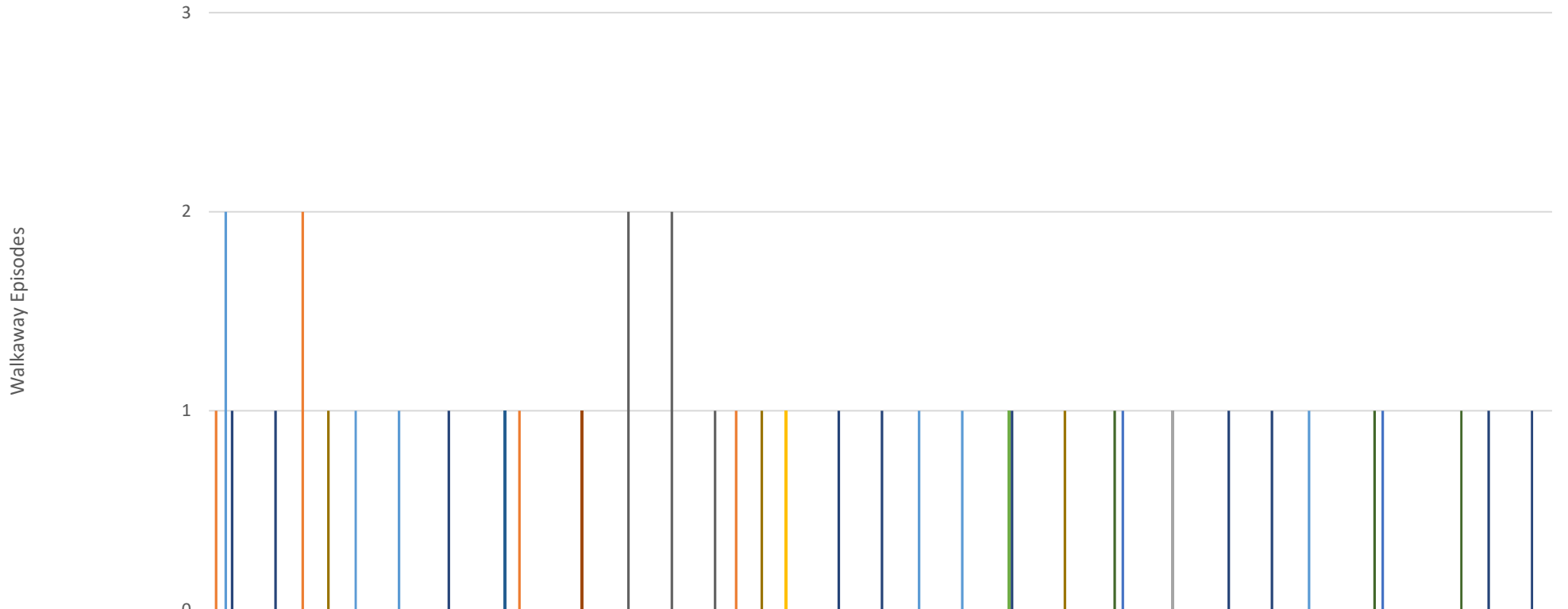
	2024 week 29	2024 week 30	2024 week 31	2024 week 32	2024 week 33	2024 week 34	2024 week 35	2024 week 36	2024 week 37	2024 week 38	2024 week 39	2024 week 40	2024 week 41	2024 week 42	2024 week 43	2024 week 44	2024 week 45	2024 week 46	2024 week 47	2024 week 48	2024 week 49	2024 week 50	2024 week 51	2024 week 52	2025 week 01	2025 week 02	2025 week 03	2025 week 04	
Public Health Clinic	1																												
Urgent Care Facility								1																					
Skilled Nursing Facility							1									1													
Community Mental Health Center													1															1	
Residential SUD								1			1																		
Custodial Care Facility																													
Psych. Residential		1	1		3														1										
Nursing Facility						1																							
Temporary Lodging						1	1					1																	
On Campus Outpatient Hospital	3	2		2	1	1	1			1	2			1												1			
Group Home			1		1				1		1		1												2	1	2		1
School						1		1	1		1	2		4	6	7	6	6	5	3	2	2	4				5		
Homeless Shelter	3	3	3	1	6	2	2	2	1	1	3	3	8	4			3	3	1	1	2		2	2	1	1	1	2	
Unassigned	2	1		4	3	2	9	7	3	2	1	2	2	2	3	5	3	4	4	3	1	4	1	1	4	5	3		
Assisted Living Facility	1	3	2	8	2	2	8	2	6	1	1	3	3		3	1	8	3	2		2	2	1	2	3	7	5	5	
Inpatient Hospital	1	4	1	3	3	8	3	2	4	5	10	6	4	4	3	2	6	1	7	7	5	3	8	9	5	6	8	3	
Inpatient Psychiatric Facility	7	5	4	7	1	6	10	5	7	5	5	4	5	10	10	12	6	11	5	7	6	15	9	7	8	7	5	6	
Prison Correctional Facility	12	10	5	9	17	13	12	6	11	12	10	9	13	9	20	8	15	20	6	18	5	12	11	6	8	7	15	12	
Emergency Room Hospital	17	34	27	28	29	23	26	30	18	18	20	20	40	16	31	20	22	22	18	23	24	24	31	29	20	26	18	23	
Other Place of Service	40	22	19	47	22	27	41	35	13	22	41	35	22	42	41	55	57	21	22	32	39	35	51	26	54	34	40	17	
Home	48	32	52	47	44	40	39	47	36	23	47	42	49	42	39	45	47	52	44	38	38	43	58	31	63	39	34	49	
Telehealth	69	80	59	69	66	57	65	77	45	38	70	73	75	56	43	80	71	69	69	68	55	99	60	54	67	52	54	72	
Office	128	141	145	140	110	112	129	116	132	92	144	112	151	126	125	139	122	175	168	142	130	129	148	117	118	106	108	115	

Place of Service -Investigations, percent of total by week



	2024 week 29	2024 week 30	2024 week 31	2024 week 32	2024 week 33	2024 week 34	2024 week 35	2024 week 36	2024 week 37	2024 week 38	2024 week 39	2024 week 40	2024 week 41	2024 week 42	2024 week 43	2024 week 44	2024 week 45	2024 week 46	2024 week 47	2024 week 48	2024 week 49	2024 week 50	2024 week 51	2024 week 52	2025 week 01	2025 week 02	2025 week 03	2025 week 04	
Nursing Facility																													
Non residential Substance Abuse Treatment Facility																		1	1										
Temporary Lodging																							1						
Residential SUD									1		1																	1	
Homeless Shelter										1																		1	
Skilled Nursing Facility		1			1														1										
School															1							1	1				1		
Community Mental Health Center						1							2										1			1	1		
Psych. Residential		1	1		3														1				1			1	1		
Custodial Care Facility														1		2	1				2		1			1	1		
On Campus Outpatient Hospital	2	2	1	2	1		1			1	1					1												1	
Assisted Living Facility				4	2				4			1			1	1	2		1			1			2	1	1		1
Office	1		2		1		1	2	2	1		2		1	1						1	1	2				1	4	
Telehealth	2	1	1	1	2			2	1		2		2		1	2	1			1		2	3				1		
Unassigned	1			2	1	1	4	3	2	1	1			1		2	1		2	1	1	3			1	1	1		
Group Home	1		2	1	4		3	2			3		1	5	1	4	1	1		3				1	1		3	1	3
Other Place of Service	3	1	2	4	4	3	3	1		2	2	3	2	6	5	3	6	4	5	6	4	2	2	2	3	5	3	6	
Inpatient Hospital	2	5	5	3	6	9	6	4	4	6	11	7	5	8	5	5	7	1	8	7	4	3	9	10	6	7	8	5	
Inpatient Psychiatric Facility	8	13	8	7	6	6	16	9	12	6	9	9	7	14	13	11	10	14	9	15	4	19	13	8	13	10	13	8	
Prison Correctional Facility	15	12	14	10	16	19	11	8	16	12	13	13	20	13	19	11	16	22	14	19	8	13	12	10	8	8	15	13	
Home	11	18	14	22	20	14	11	16	18	16	21	17	15	18	10	9	18	16	19	15	6	22	19	10	21	17	12	12	
Emergency Room Hospital	24	36	36	28	30	30	28	36	26	20	25	23	42	30	32	26	27	29	24	28	28	31	36	31	31	32	25	31	

North Sound BH ASO Walkaway Chart 07/14/24 to 01/25/25



	2023 Week 22	2023 Week 24	2023 Week 27	2023 Week 28	2023 Week 29	2023 Week 30	2023 Week 35	2023 Week 36	2023 Week 43	2023 Week 47	2023 Week 48	2023 Week 49	2023 Week 51	2024 Week 03	2024 Week 08	2024 Week 12	2024 Week 15	2024 Week 21	2024 Week 24	2024 Week 25	2024 Week 30	2024 Week 36	2024 Week 37	2024 Week 42	2024 Week 43	2024 Week 45	2024 Week 46	2024 Week 51	2024 Week 53	2025 Week 03	2025 Week 04
Cascade Valley																						1						1			
Cascade Valley Hospital	1		2					1					1																		
Evergreen Monroe																							1								
Island Co Jail														1																	
Island Hospital	2			1	1												1	1							1						
N/A San Juan Jail																				1											
Peace Health	1	1				1									1	1			1						1	1			1	1	
Peace Island Medical									1																						
Skagit Valley										2	2	1																			
United General			1											1							1										
Whidbey Medical Center							1																								
Whidby Health																						1					1	1			